

# TIMBER SALE MAP



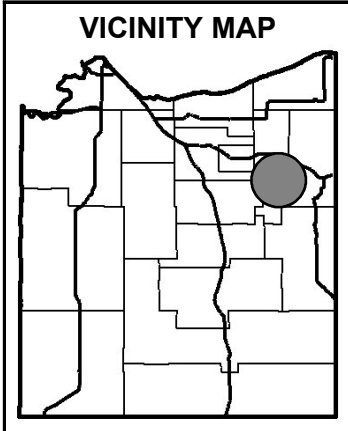
Douglas County Forestry Department  
 9182 East Hughes Avenue  
 P.O. Box 211  
 Solon Springs, WI 54873  
 Phone (715) 378-2219, Fax (715) 378-2807

TRACT NUMBER: **06-20**

SALE NUMBER:

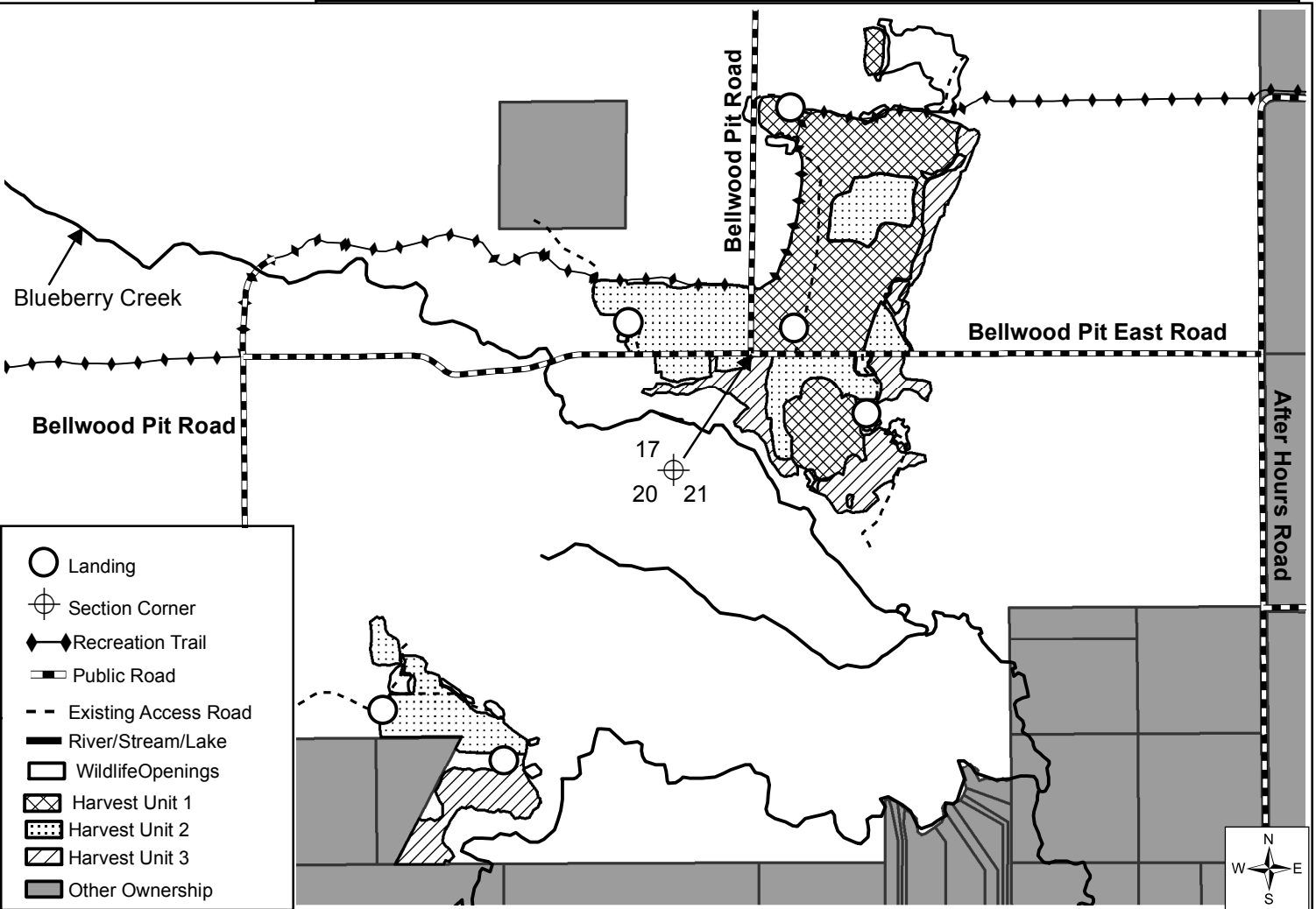
Prepared By: Logan Jones Legal: Sec 16,17,20,21 T47N - R10W  
 Sale Name: Maximus Town: Brule Topography: Flat  
 Scale Method: Ticket Scale Acres: 208 Harvest Units: 3 Soils: Loamy Sand  
 Contract Period: 3 Years Map Scale: 3" = 1 mile Season: All-Season

-- See the Douglas County Timber Sale Contract and reverse side for terms and conditions. --



SPECIES, PRICE & ESTIMATED VOLUME INFORMATION				
SPECIES	4" ROUNDWOOD (CORDS)	WHOLE-TREE (CORDS)	SAWLOGS (MBF)	MINIMUM TOTAL SPECIES PRICE
Red Pine	5,295	6,465	XXX	\$188,778.00
Aspen	950	1,200	XXX	\$17,160.00
<b>TOTALS</b>	<b>6,245</b>	<b>7,665</b>	<b>XXX</b>	<b>\$205,938.00</b>

The Red Pine volume contains approximately 96% Red Pine, 2% Balsam Fir, 1% Jack Pine & 1% Misc. The Red Pine volume contains an estimated 80% sawlog sized material with a 13" average diameter. The Aspen volume contains approximately 96% Aspen, and 4% & Misc.



- Landing
- Section Corner
- Recreation Trail
- Public Road
- Existing Access Road
- River/Stream/Lake
- Wildlife Openings
- Harvest Unit 1
- Harvest Unit 2
- Harvest Unit 3
- Other Ownership

