

Lead Safe Toys and Gifts

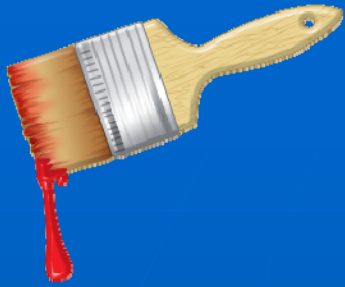
Douglas County Department of Health
and Human Services

Brian Becker, RS, Environmental Health
Specialist

(715) 395-1304

Lead Safe Toys and Gifts

- How is lead used in manufacturing?
- How can a child be exposed?
- Can a child be tested for lead poisoning?
- How can you limit a child's exposure to lead in toys?
- Where can I find information on toy recalls?
 - <http://douglascountywi.org/>
 - http://www.dhs.wisconsin.gov/lead/LSources_Products.htm
 - <http://www.recalls.gov/recent.html>
- How can a toy be tested for lead?
- What does Douglas County do to prevent lead poisoning caused by lead in toys?
- What are some other safety considerations when buying gifts for children?



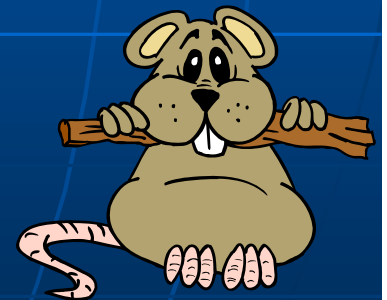
How is Lead Used in Manufacturing?



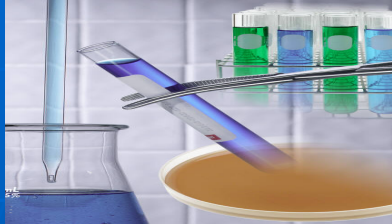
- Paint – Painted Surfaces on toys can contain lead.
 - Lead in paint is banned in the U.S. However it may be found on older toys (pre 1978) or imported toys
- Plastic – Lead may be used in plastic products to provide heat stability and makes plastic more flexible, allowing it to keep its shape.

How Can a Child be Exposed?

- The primary cause of lead poisoning is still lead dust from deteriorated lead based paint.
- Other lead poisoning can be caused by chewing on or ingesting other items that contain lead.
- Toys are often chewed on by younger children.
- Some recent lead poisoning deaths have been attributed to swallowing children's jewelry that contained lead.



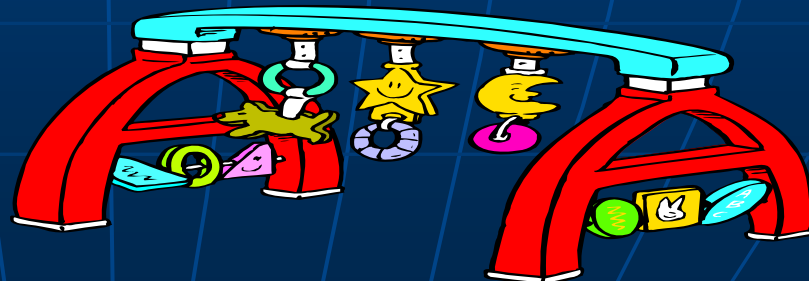
Can a Child Be Tested for Lead Poisoning?



- Yes, it is recommended that children are tested for lead poisoning at the ages of 1 and 2 years old.
- A child can be tested for lead by their physician.
- The Douglas County Department of Health and Human Services can also provide a lead screening test for children.

How can you limit a child's exposure to lead in toys?

- Identify whether you have a product that has been recalled.
- If you have a recalled product.
 - Stop letting your child use the product
 - Follow the manufacturer's instructions for the recall.
- Beware of young children's tendencies to put small toys in their mouths



Where can I find information on toy recalls?

- <http://douglascountywi.org/>
- http://www.dhs.wisconsin.gov/lead/L_Sources_Products.htm
- <http://www.recalls.gov/recent.html>



How can a toy be tested for lead?

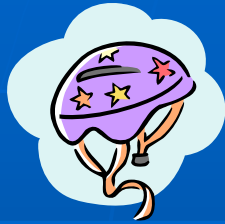
- Many manufacturers and government agencies are testing toys for lead.
- There are color change tests that can be purchased at retail stores.
 - Changes color if lead is found.
 - Wash chemicals off toys after use
- Lead Inspectors can test toys with an XRF.
- Toys can be tested by a certified laboratory. www.epa.gov/lead/pubs/nllaplist.pdf.
- <http://www.dhs.wisconsin.gov/lead/NCHHfactsheet-leadtestconprod.pdf>



What does Douglas County do to prevent lead poisoning caused by lead in toys?

- The Public Health unit provides blood lead screening tests for children who are not tested by their physicians.
- The Public Health Service provides information on product recalls to the public through the Douglas County Website
- The Public Health Service investigates the lead poisoning of children, identifying and ordering the remediation of potential lead hazards in their homes, including an evaluation of the children's toys.

What are some other safety considerations when buying gifts for children?



- Riding Toys – Buy protective gear for children and make sure they use it.
- Choking Hazards – If a toy is small enough to go through a toilet paper tube, do not give it to a child under 3
- Balloons – Discard broken balloons immediately. Keep deflated balloons away from children.
- Chargers and adapters – Charging batteries should be supervised by adults.



Additional Resources

- National Center for Health Housing Fact Sheet – Toys and Childhood Lead Exposure
- National Center for Health Housing Fact Sheet – Testing Toys for Lead
- Lead Recalls – Wisconsin Department of Health
- Recent Recalls