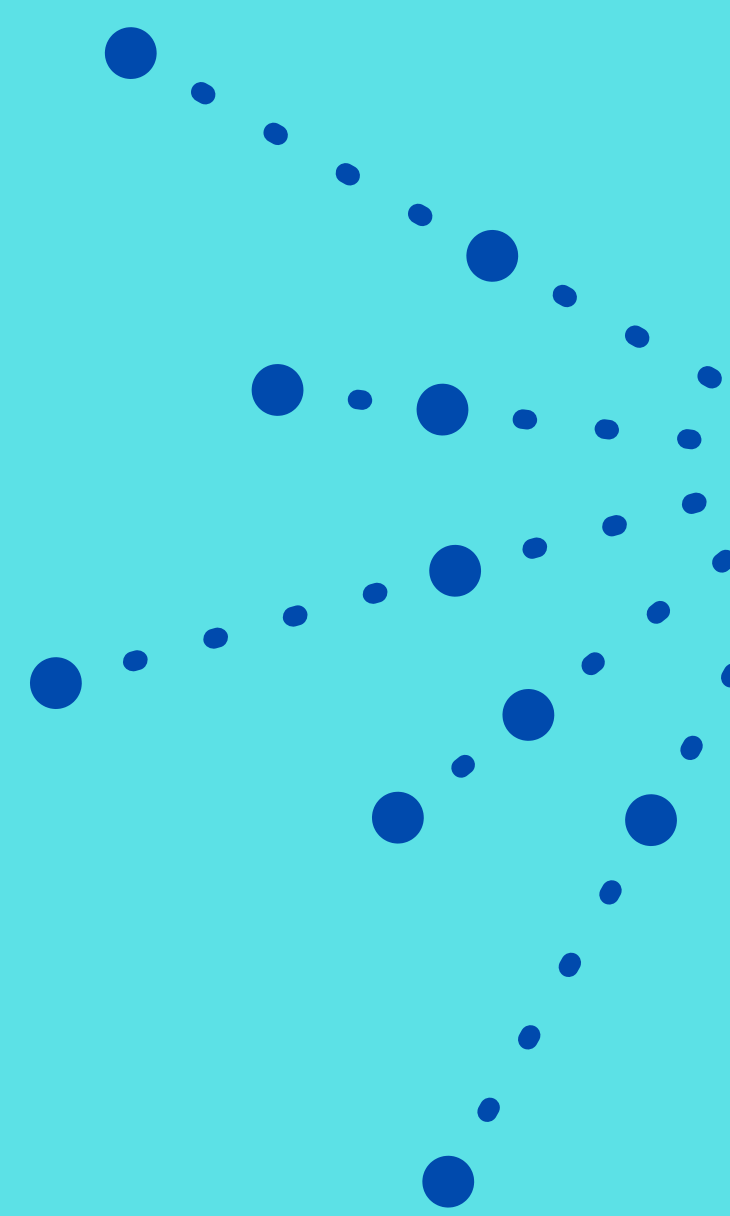
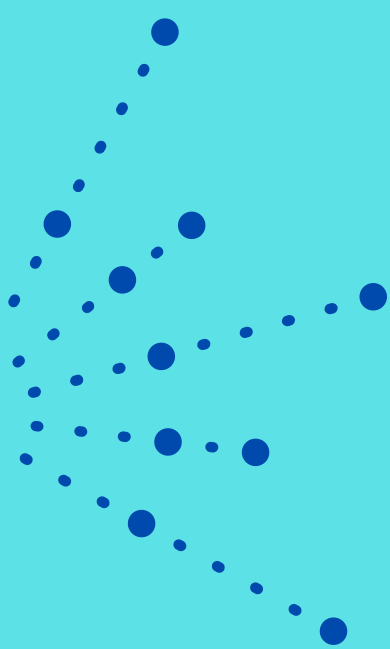


# TAKE A CLOSER LOOK AT YOUR BRAIN HEALTH



A MEMORY SCREEN IS A QUICK & FREE WELLNESS TOOL THAT IS SIMILAR TO A BLOOD PRESSURE SCREEN, DIABETES SCREEN, OR VISION CHECK.

IT CAN IDENTIFY POSSIBLE CHANGES IN MEMORY OR COGNITION, CREATE A BASELINE FOR FUTURE MONITORING, AND OPEN THE DOOR TO A CONVERSATION WITH YOUR MEDICAL PROVIDER.



**SUPERIOR PUBLIC LIBRARY**  
**WEDNESDAY, MAY 4TH**  
**10:00AM-12:00PM**  
**OR**  
**1:00PM-3:00PM**

Call to reserve your 15 minute slot!

ADRC of Douglas County

715-395-1234

or

[adrc@douglascountywi.org](mailto:adrc@douglascountywi.org)

All results are confidential

