

TIMBER SALE MAP



Douglas County Forestry Department
 9182 East Hughes Avenue
 P.O. Box 211
 Solon Springs, WI 54873
 Phone (715) 378-2219, Fax (715) 378-2807

TRACT NUMBER: 12-18

SALE NUMBER: 4417

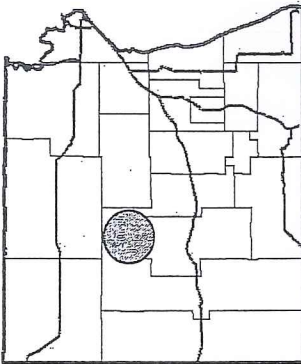
COPY

Justin Holmes

Prepared By: Terry Asleson (WDNR) Legal: Sec 10 & 15 T45N - R13W
 Sale Name: Diverse Response Town: Gordon Topography: Sloping Hills
 Scale Method: Ticket Scale Acres: 151 Harvest Units: 3 Soils: Sandy Loam
 Contract Period: 2 Years Map Scale: 4" = 1 mile Season: Seasonal (see reverse)

-- See the Douglas County Timber Sale Contract and reverse side for terms and conditions. --

VICINITY MAP



SPECIES, PRICE & ESTIMATED VOLUME INFORMATION

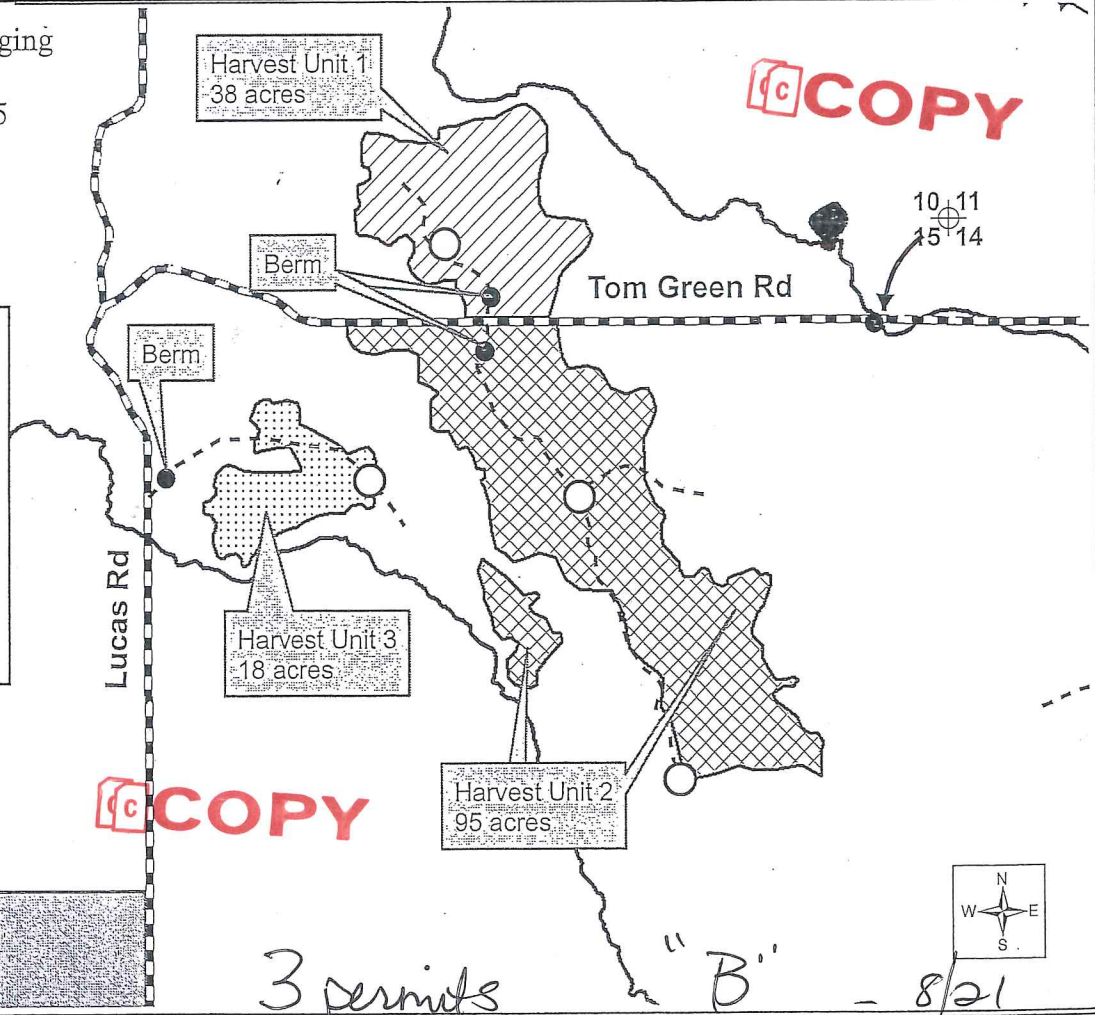
SPECIES	4" ROUNDWOOD (CORDS)	WHOLE-TREE (CORDS)	SAWLOGS (MBF)	MINIMUM TOTAL SPECIES PRICE
Mixed HW	3,780	XXX	XXX	\$51,030.00
				\$16542.80
TOTALS	3,780	XXX	XXX	\$51,030.00

The Mixed HW volume contains approximately 20% Sugar Maple, 19% Red Maple, 17% Red Oak, 14% Basswood, 11% Yellow Birch, 10% Aspen, 8% Ash, and 1% Misc. The Mixed HW cord volume contains approximately 25 percent sawlog size/quality material.

Theodore Strzok Logging
 P.O. Box 243
 Holcombe, WI 54745

COPY

- ⊕ Section Corner
- Landing
- ▬ Public Road
- - - Existing Access Road
- ▨ Harvest Unit 1
- ▩ Harvest Unit 2
- ▧ Harvest Unit 3
- ▦ Other Ownership
- ▬ River/Stream/Lake



COPY

