

June 1, 2022

**AGING AND DISABILITY RESOURCE CENTER OF  
DOUGLAS COUNTY - ADVISORY COMMITTEE**

**Wednesday, June 8, 2022, 4:00 p.m.**

**Government Center, Boardroom 201**

**1316 North 14th Street, Superior, Wisconsin**

**OR JOIN BY**

**<https://meet.google.com/jzm-imaf-svy>**

**Or dial: (US) +1 662-532-9004 PIN: 597 546 497#**

*\*Due to COVID-19 concerns, the public may attend the meeting remotely.*

Please call Erika Johnson (715-395-7532) or the County Clerk's Office (715-395-1569) if you are unable to attend.

**MEMBERS:** Shawna Anderson, Chair                      Carol Jones, Vice Chair  
                  Rosemary Lear                                      Tom Karas

**A G E N D A**

(Committee to maintain a two-hour meeting limit *or* take action to continue meeting beyond that time).

1. Roll call.
2. Approval of minutes from the March 9, 2022, meeting (attached).
3. Action items:
  - a. Recommendation to appoint Char Kastern to committee (attached); and
  - b. Officer election.
4. Informational items:
  - a. Dementia Care Specialist programming;
  - b. Program update (attached); and
  - c. Budget (to be distributed);
  - d. ADRC newsletter (attached).
5. Future agenda items.
6. Adjournment.

cc: Sue Sandvick    Ann Doucette    Shelley Nelson (Telegram)    County Board Supervisors  
     Anna Carlson    Erika Johnson    Douglas County Website

NOTE: Attachments to agenda are available in County Clerk's Office for review or copying. Action may be taken on any item listed on the agenda. The County of Douglas complies with the Americans with Disabilities Act of 1990. If you are in need of any accommodation to participate in the public meeting process, please contact the Douglas County Clerk's Office at (715) 395-1341 by 4:00 p.m. on the day prior to the scheduled meeting. Douglas County will attempt to accommodate any request, depending on the amount of notice we received.

Posted: Courthouse, Government Center, Superior Telegram, Superior Public Library

*Kendra Schmidt*

06/01/2022

**AGING AND DISABILITY RESOURCE CENTER OF DOUGLAS COUNTY  
ADVISORY COMMITTEE**

**Wednesday, December 8, 2021, 4:15 p.m.,  
Government Center, Boardroom 201  
1316 North 14<sup>th</sup> Street, Superior, Wisconsin**

Meeting called to order by Chair Shawna Anderson.

**ROLL CALL:** Present – Shawna Anderson, Carol Jones, Rosemary Lear. Absent – Tom Karas. Others present – Erika Johnson, Julie Hudecheck, Kaci Lundgren, Committee Clerk.

**APPROVAL OF MINUTES:** Motion by Lear, second Jones, to approve minutes from the September 8, 2021, meeting. Motion carried.

**INFORMATIONAL ITEMS:**

**Introduction of New Staff:** Julie Hudecheck, introduced. Due to transition of state mandated duties, position opened. No impact on levy due to state funding and monies from program.

**Membership:** One person interested, but has not submitted application. Many other local organizations are recruiting for members with no luck; will continue efforts.

**Program Update:** Included with agenda. No concerns or complaints; numbers served remain consistent. New state system for program referrals will be implemented. 2022 state mandate requires each ADRC to have a Dementia Care Specialist at least .5 time. Current employee will acquire additional duties to cover requirement.

**Budget:** Projected to be under budget.

**FUTURE AGENDA ITEMS:** Membership; program update; budget. Next meeting: March 9, 2022.

**ADJOURNMENT:** Motion by Lear, second Jones, to adjourn. Motion carried. Meeting adjourned at 4:32 p.m.

Submitted by,

Kaci Jo Lundgren  
Committee Clerk

## ADRC Report 2022

**Date: May 2022**

**Submitted by: Erika Johnson, ADRC Director**

Years 2021-2022	Jan 21/22	Feb 21/22	Mar 21/22	Apr 21/22	May 21/22	June 21/22	July 21/22	Aug 21/22	Sep 21/22	Oct 21/22	Nov 21/22	Dec 21/22
<b>Referrals by Type</b>												
Long Term Care Functional Screen	17/21	9/9	13/14	11/17	12/	9/	15/	25/	16/	9/	10/	15/
MDSQ Referrals (Nursing Home)	0/6	0/4	0/x	0/x	0/	0/	0/	0/	1/	x/	x/	x/
<b>Number of Clients Served</b>	<b>Jan 21/22</b>	<b>Feb 21/22</b>	<b>Mar 21/22</b>	<b>Apr 21/22</b>	<b>May 21/22</b>	<b>June 21/22</b>	<b>July 21/22</b>	<b>Aug 21/22</b>	<b>Sep 21/22</b>	<b>Oct 21/22</b>	<b>Nov 21/22</b>	<b>Dec 21/22</b>
Elderly Benefit Specialist (EBS)	24/32	24/19	24/20	x/20	29/	30/	17/	31/	24/	56/	113/	63/
Disability Benefit Specialist (new cases)	7/7	2/3	3/3	5/2	6/	7/	4/	1/	4/	5/	5/	5/
<b>Total Cases</b>	<b>37</b>	<b>39</b>	<b>37</b>	<b>38</b>								
Total Number of ADRC Contacts*	447/ 452	415/ 411	689/ 476	431/ 396	453/	437/	446/	460/	423/	451/	512/	349/
Memory Screens	0/2	1/1	2/0	3/0	0/	0/	0/	0/	1/	0/	0/	0/
<b>Number Served in Long Term Care Programs</b>	<b>Jan 21/22</b>	<b>Feb 21/22</b>	<b>Mar 21/22</b>	<b>Apr 21/22</b>	<b>May 21/22</b>	<b>June 21/22</b>	<b>July 21/22</b>	<b>Aug 21/22</b>	<b>Sep 21/22</b>	<b>Oct 21/22</b>	<b>Nov 21/22</b>	<b>Dec 21/22</b>
Family Care Enrollments	5/9	7/8	8/7	7/5	11/	7/	4/	6/	8/	6/	10/	0/
Family Care Disenrollments	1/2	2/0	2/1	3/1	1/	2/	2/	1/	1/	1/	2/	1/
IRIS Enrollments	4/0	1/0	2/1	0/2	0/	0/	0/	0/	0/	3/	0/	2/
IRIS Disenrollments	2/0	3/0	1/0	1/0	2/	1/	2/	5/	2/	1/	0/	0/
Nursing Home Relocations	1/0	0/0	0/0	0/x	1/	0/	0/	1/	0/	0/	0/	0/
ADRC Formal Complaints	0/0	0/0	0/0	0/0	0/	0/	0/	1/	0/	0/	0/	1/

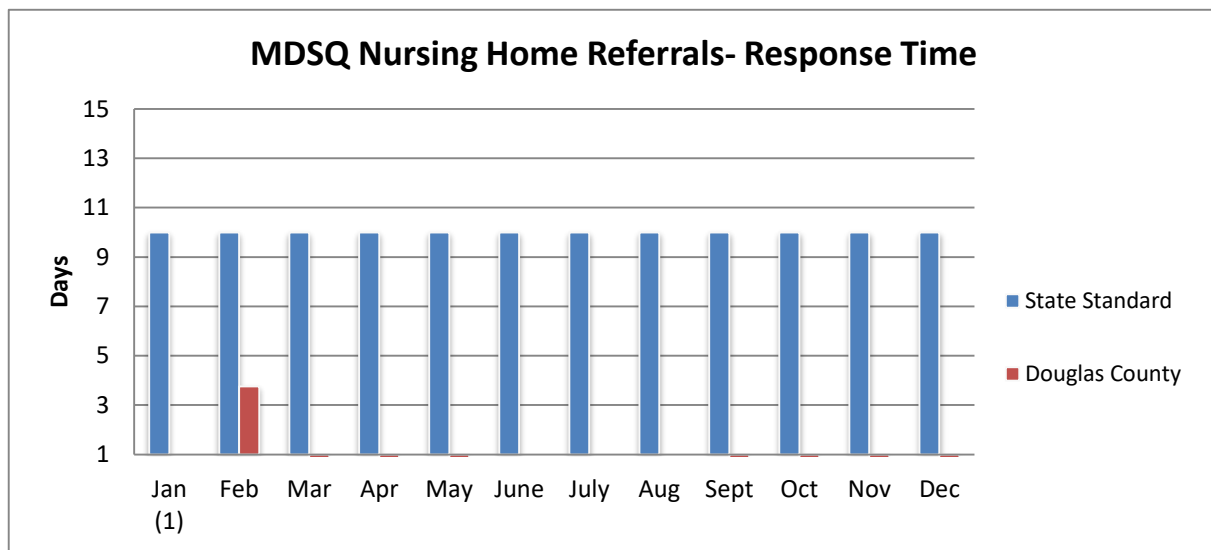
\*ADRC workers are required to record all **Contacts**. A contact represents an individual one-to-one interaction (conversation) that has occurred either in person, at a home visit, ADRC walk-in, telephone, email, or written correspondence where information is exchanged. Each interaction is counted as an encounter and will demonstrate one instance of providing any ADRC activity. A Contact records the **ADRC Outcomes**. An **Outcome** is categorized into the following and must be recorded as such for reimbursement purposes: 1) Provided Information and Assistance 2) Provided Follow Up 3) Provided Options Counseling 4) Administered Long Term Care Functional Screen 5) Provided Assistance with Medicaid Application Process 6) Provided Short Term Service Coordination 7) Provided Enrollment Counseling 8) Provided Disenrollment Counseling 9) Memory Screen 10) Behavioral Mental Health Screens 11) Complaints/Advocacy 12) Community Partners 13) Referral for ADRC

**Disability Benefit Specialist (DBS) Monetary Impact**

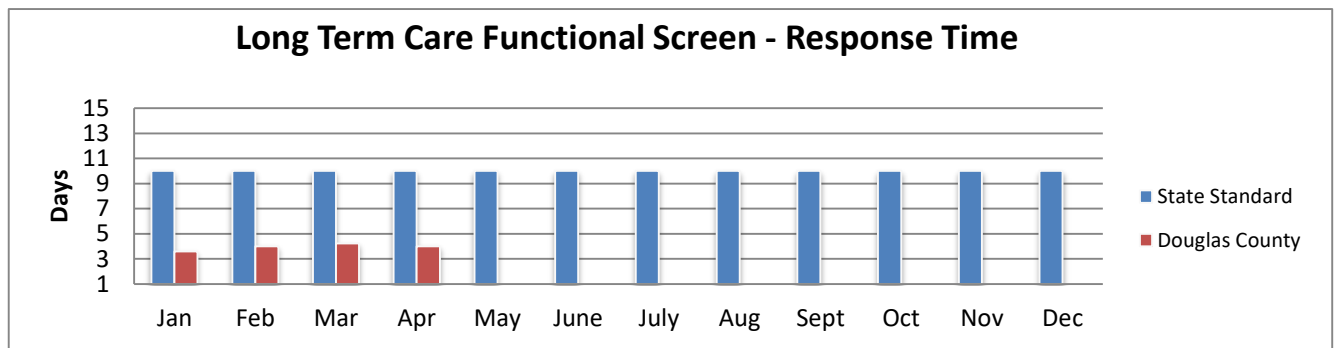
- Monetary Impact of Cases Closed:
  - March 2022 (0 cases closed) \$0
  - April 2022 (1 case closed) \$35,144

**Alzheimer’s Family and Caregiver Support Program (AFCSP)**

AFCSP	2013	2014	2015	2016	2017	2018	2019	2020	2021	2022
Total Cases Served	7	10	8	8	6	8	7	14	13	6



Per the ADRC contract, the ADRC shall contact the resident, either by phone or in person, within 10 business days of receiving a referral.



Per the ADRC Contract, the ADRC must initiate the functional screen within 10 calendar days of the time the person requests or accepts the offer of a screen.

# ADRC EXPRESS

APRIL 2022



We are happy to announce that the ADRC Express is back in publication and will be released on a monthly basis. Here at the ADRC, we are your first stop to get accurate, unbiased information on all aspects of life related to aging or living with a disability. We are a welcoming place where you can go for information on a broad range of programs and services.

---

Stay connected and learn about services, resources and educational programming by liking our NEW Facebook page! Search ADRC of Douglas County, WI.

*Providing older adults and people with physical disabilities or intellectual disabilities the resources needed to live with dignity and security, and achieve maximum independence and quality of life.*



## Did you hear the news?

The ADRC now employs a full-time Dementia Care Specialist (DCS). Chelsea Thompson supports people living with dementia and their caregivers in order to ensure the highest quality of life possible while living at home. She can provide free information and assistance to adults with memory or cognitive concerns, support to caregivers, and help to develop dementia-friendly communities where people with dementia can remain active and safe, and caregivers can feel supported. Call today to get more information on about educational programs and services that Chelsea provides!

Continued on page 2

## MEET THE ADRC TEAM!



Douglas County ADRC staff have over 29 years of combined experience serving older adults and adults with disabilities residing in Douglas County.

Pictured from left to right, back row, is Information & Assistance Specialist, Julie Hudecheck; Dementia Care Specialist, Chelsea Thompson; ADRC Director, Erika Johnson; Information & Assistance Specialist, Gino Franceschi. From left to right, front row, Disability Benefit Specialist, Kris Westerlund and Information & Assistance Specialist, Lexi Johnson.

## UPCOMING EVENTS!

Powerful Tools for Caregivers  
Tuesdays, May 3rd-June 7th  
1:00 PM - 2:30 PM  
Lew Martin Senior Center  
1527 Tower Ave., Superior  
Call Luann to register  
715-394-3611

Learn valuable tools to reduce caregiver stress.

Caregiver Conversations  
3rd Wednesday  
of the month  
1:00 PM - 2:00 PM  
United Presbyterian Church  
229 N 28th Street., Superior

Receive support from other caregivers to help you through your caregiving journey.

Government Center  
1316 N 14th Street  
Suite 327  
Superior, WI 54880

## CONTACT US TODAY!

ADRC@DOUGLASCOUNTYWI.ORG  
WWW.DOUGLASCOUNTYWI.ORG/ADRC

Main: (715) 395-1234  
Toll-Free: (866) 946-2372  
Fax: (715) 395-7371

# ADRC EXPRESS

**MAY 2022**



## **MAY IS OLDER AMERICANS ACT MONTH!**

Older adults play vital, positive roles in our communities – as family members, friends, mentors, volunteers, civic leaders, members of the workforce, and more. Just as every person is unique, so too is how they age and how they choose to do it – and there is no “right” way. That’s why the theme for Older Americans Month (OAM) 2022 is Age My Way.



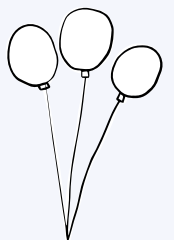
Every May, the Administration for Community Living (ACL) leads the celebration of OAM. This year’s theme focuses on how older adults can age in their communities, living independently for as long as possible and participating in ways they choose.

Stop by the Lew Martin Senior Center (1527 Tower Ave. Superior) on Wednesday, May 11th from 9:00 am - 12:30 pm to celebrate Older Americans Month.

Stay for the 11:30 am lunch! Lunch includes Spaghetti and Meat Sauce, Broccoli, Salad, Garlic Bread, Cheesecake & Topping. The suggested donation for individuals 60+ is \$4.00. Please call 715-394-3611 to reserve a meal at least 24-hours in advance.

- Complimentary memory screens offered by the ADRC
- Blood Pressure Checks
- 2022 Douglas County Senior & Disabilities Resource Guide
- Educational and Health Promotion Resources
- Exercise Group – Join in at 9am
- Tai Chi – Demonstration 10:30
- Door Prizes and other giveaways!

Join us in  
celebrating  
Older  
Americans  
Act Month!





## How can you support the Douglas County Dementia Friendly Initiative?



In partnership with the Douglas County Caregiver Coalition, the ADRC offers no-cost dementia friendly business training or Dementia Friends informational sessions. More than 29 Douglas County businesses and service providers have joined in the initiative of creating a dementia friendly community.

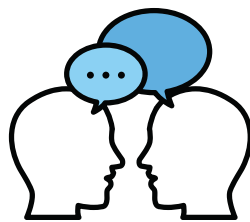
With 70-90% of people with dementia living at home, they and their family caregivers will choose businesses that are easy to navigate and have helpful, understanding staff. We can all help create a dementia friendly community!

Contact the ADRC at 715-395-1234 to schedule your session today and receive a window cling to display in your business promoting your commitment to creating a safe and friendly environment.



Memory Screen Clinic  
Superior Library  
May 4th, 2022  
10:00AM-12:00PM  
1:00PM-3:00PM  
Call 715-395-1234 to  
reserve your  
15 minute time slot!

*You're Invited!*



A MEMORY SCREEN IS A QUICK & FREE WELLNESS TOOL THAT IS SIMILAR TO A BLOOD PRESSURE SCREEN, DIABETES SCREEN, OR VISION CHECK. IT CAN IDENTIFY POSSIBLE CHANGES IN MEMORY OR COGNITION, CREATE A BASELINE FOR FUTURE MONITORING, AND OPEN THE DOOR TO A CONVERSATION WITH YOUR MEDICAL PROVIDER.

### CONTACT US TODAY!

Government Center  
1316 N 14th Street  
Suite 327  
Superior, WI 54880

ADRC@DOUGLASCOUNTYWI.ORG  
WWW.DOUGLASCOUNTYWI.ORG/ADRC

Main: (715) 395-1234  
Toll-Free: (866) 946-2372  
Fax: (715) 395-7371

 ADRC of Douglas County, WI